

TECHNICAL DATA SHEET

RAPI IP65 / Aga-Power-Led® RGB

VERSION - 11.04.2017

STANDARD LUMINAIRE

Reference	RAPI
Protection Class	IP65
Lighting Source	Aga-Power-Led® RGB
Connector	Festoon on B'Light conductor 16mm ²
Dimensions	75 x 67mm
Standard Length	125 - 510 - 1005 - 1500 - 1995mm
Length on measure	on request up to 1995mm
Nb Lighting Unit	17 LED/m
Voltage	24V
Power	54.4 W/m
Connecting Cable	One Side: 1m cable PUR 4x0.75mm ²
Grid	Anti Glare: GAP
End Caps	EFLA

FINISH

Recessed Box

Standard	Stainless Steel
On request	Powder Coating RAL

Glass

Standard	Clear Glass
On request	Opaline Glass

ON REQUEST

Connecting Plug	AMS / AF or AMS-E / AF-E (IP68)
Dimming Option	Dali, KNX Ask technical departement for more information

LIGHTING SOURCE

Lighting Source	Aga-Power-Led® RGB
Ref	03LP22_RGB
Power	3.2W
Voltage	24V
Beam Angle	120°
CRI	80
Lifetime	60'000h
Working T°	-30°C ~ +50°C

Color Temperature & Luminous Flux / Unit

CCT	Red	Green	Blue
Luminous Flux/Unit	28 ~ 34lm	47 ~ 52lm	16 ~ 21lm

CERTIFICAT



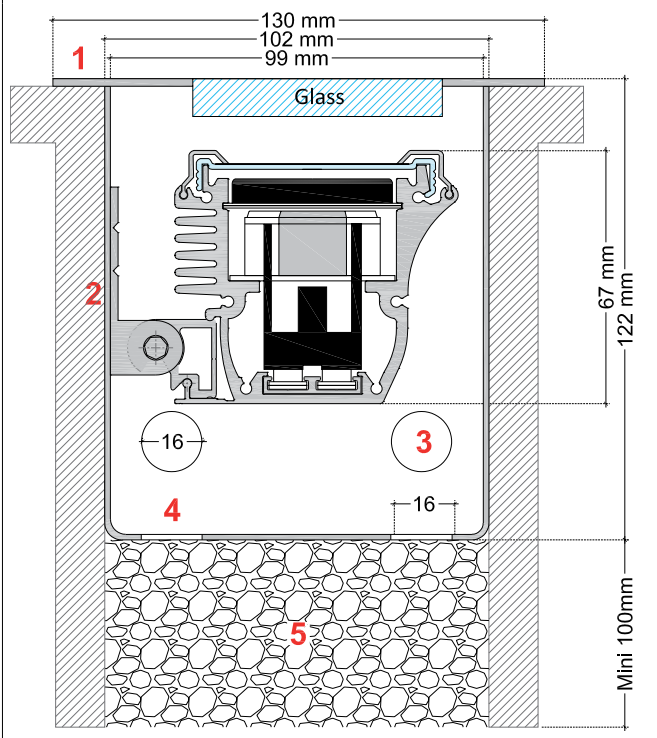
APPLICATION: Upward lighting only for Walls, Facades, Columns



RAPI

When installing the luminaire in the ground, it is important and essential to provide a proper stone drainage so that condensation can drain out.

- 1 : Ground recessed LAPL luminaire
- 2 : Stainless steel RAPI BOX
- 3 : Holes ø16mm for electrical tube
- 4 : Drain holes so that condensation can drain out
- 5 : Stone drainage minimum 100mm



ON REQUEST

Connecting plug AF/AMS



Connecting plug AF-E/AMS-E (IP68)

